



FITTING INSTRUCTIONS FOR AB0037 ADVENTURE BARS
HONDA CB125R-CB300R 2018



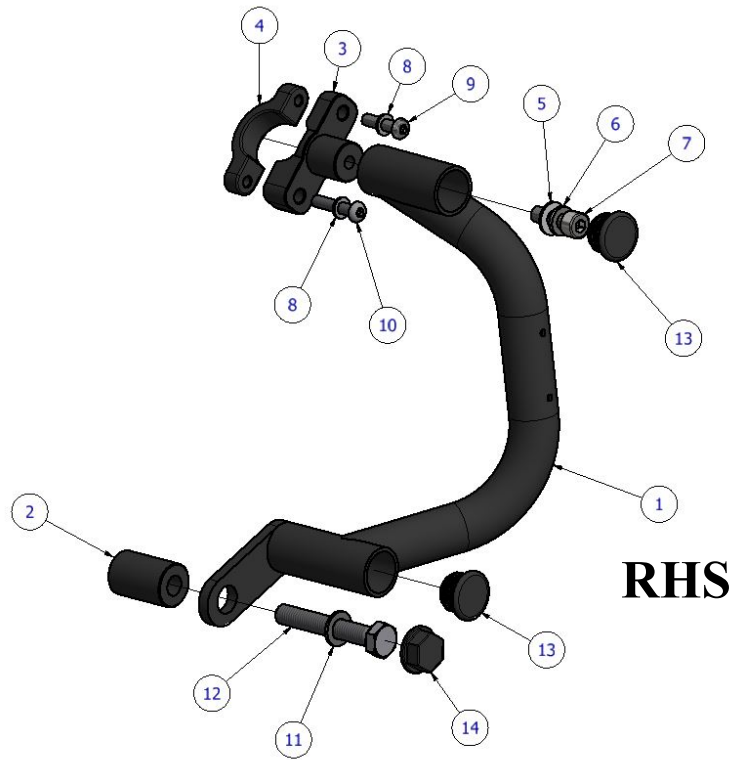
THIS KIT CONTAINS THE ITEMS PICTURED AND LABELLED BELOW.
DO NOT PROCEED UNTIL YOU ARE SURE ALL PARTS ARE PRESENT.

Please note that the way the kit is packed does not necessarily represent the way of mounting to the bike.

THE PARTS SHOWN MAY BE REPRESENTATIVE ONLY (FOR CLARITY OF INSTRUCTIONS ONLY).

Please note that in cases where kits are packed with rubber washers holding the components onto the bolt – *the rubber washers should be thrown away!*

Digital copies of these instructions are available to download from www.rg-racing.com



LEGEND

- ITEM 1 = RHS ADVENTURE BAR (CB070) (x1) {SHOWN ABOVE}– LHS ADVENTURE BAR (CB069) (x1)
- ITEM 2 = SPACER (S1158) (x2)
- ITEM 3 = LARGE FRAME CLAMP (F0048) (x2)
- ITEM 4 = SMALL FRAME CLAMP (F0049) (x2)
- ITEM 5 = M8 WASHER (x2)
- ITEM 6 = M8 SPRING WASHER (x2)
- ITEM 7 = M8 x 1.25 x 25mm LONG CAP HEAD BOLT (x2)
- ITEM 8 = M6 WASHER (x4)
- ITEM 9 = M6 x 1mm x 25mm LONG BUTTON HEAD BOLT (x2)
- ITEM 10 = M6 x 1mm x 30mm LONG BUTTON HEAD BOLT (x2)
- ITEM 11 = M10 WASHER (x2)
- ITEM 12 = M10 x 1.25mm x 65mm LONG HEX HEAD BOLT (x2)
- ITEM 13 = TUBE PLUG (FI0149) (x4)
- ITEM 14 = M10 RUBBER HEX HEAD CAPS (NC0001) (x2)



TOOLS REQUIRED

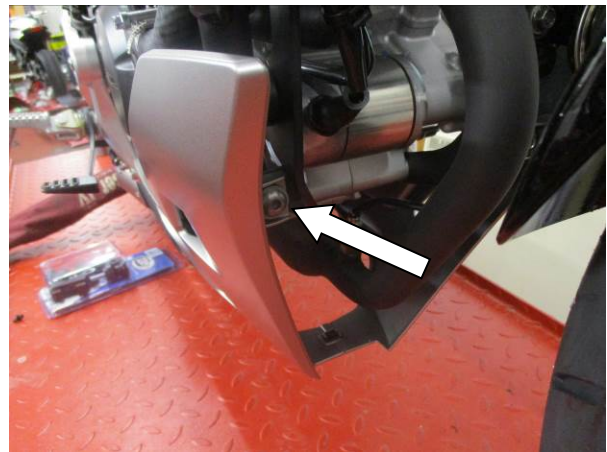
- Set of metric Allen keys.
- 17mm Socket and wrench.

MAXIMUM TORQUE SETTINGS

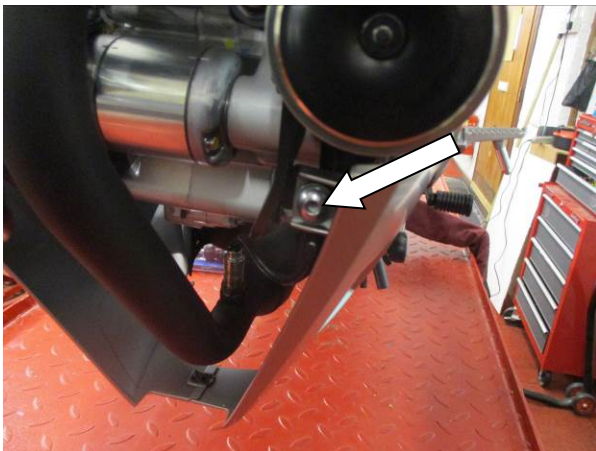
- M4 BOLT = 8Nm
- M5 BOLT = 12Nm
- M6 BOLT = 15Nm
- M8 BOLT = 20Nm
- M10 BOLT = 40Nm



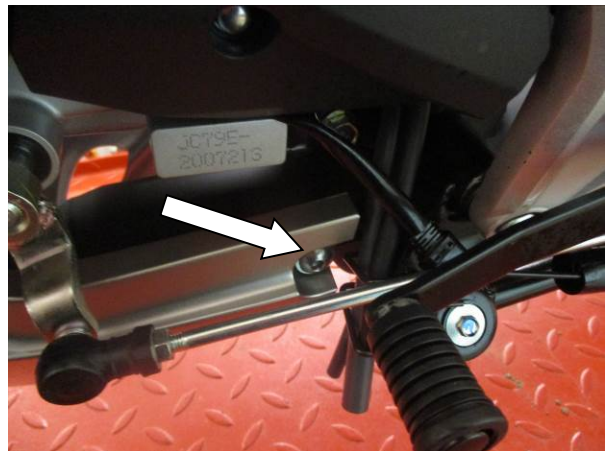
Picture 1



Picture 2



Picture 3



Picture 4



Picture 5



Picture 6



Picture 7



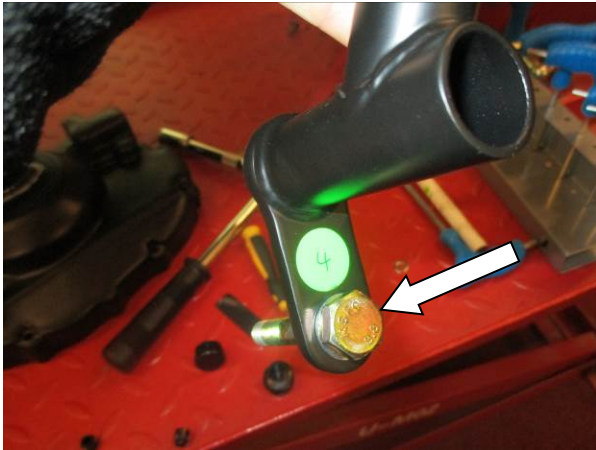
Picture 8



Picture 9



Picture 10



Picture 11



Picture 12



Picture 13

FITTING INSTRUCTIONS

- While supporting the belly pan remove the four bolts arrowed in Picture 1 to Picture 4, and carefully remove the belly pan.
- Gently position the small clamp (ITEM 4) as shown in Picture 5 and Picture 6, with the larger offset at the bottom (Shown in Picture 5).
- Slide one M6 washer (ITEM 8) over the 25mm M6 Bolt (ITEM 9) and insert the bolt and washer into the thinner end of the Large frame clamp (ITEM 3).
- Slide one M6 washer (ITEM 8) over the 30mm M6 Bolt (ITEM 10) and insert the bolt and washer into the thicker end of the Large frame clamp (ITEM 3).
- Offer the assembly up to the smaller clamp, and evenly tighten the two bolts to secure it in place. NOTE: DO NOT FULLY TIGHTEN.
- Remove the engine mount bolt shown in Picture 9.
- Insert the spacer (ITEM 2) into the recess.

R&G

Unit 1, Shelley's Lane, East Worldham, Alton, Hampshire, GU34 3AQ
 Tel: +44 (0)1420 89007 Fax: +44 (0)1420 87301 www.rg-racing.com Email: info@rg-racing.com



- Slide the M10 washer (ITEM 11) over the M10 x 65mm bolt (ITEM 12) and insert the bolt into the lower mount of the RHS Adventure bar (ITEM 1) (shown in Picture 11).
- Slide an M8 Spring washer (ITEM 6), and M8 Washer (ITEM 5) over the M8 x 25mm bolt (ITEM 7).
- Insert the bolt into the cupped spacer on the RHS Adventure bar (ITEM 1) (shown in Picture 12).
- Offer the assembly up to the two mounts, and evenly torque all the bolts up.
- Insert two tube plugs (ITEM 13) into the recesses shown in Picture 13.
- Fit the hex head cap (ITEM 14) over the M10 bolt head.
- Repeat the above steps for the LHS adventure bar.
- With both sets of adventure bars fitted, refit the belly pan.

ISSUE 1 28/01/2019 (LF)

CONSUMER NOTICE

The catalogue description and any exhibition of samples are only broad indications of the Products and R&G may make design changes which do not diminish their performance or visual appeal and supplying them in such state shall conform to the order. The Buyer acknowledges no representation or warranty (other than as to title) has been given or will apply to the Products other than those in R&G's order or confirmation and the Buyer confirms it has chosen the Products as being of merchantable quality and suitable for its particular purposes. Where R&G fits the Products or undertakes other services it shall exercise reasonable skill and care and rectify any fault free of charge unless the workmanship has been disturbed. The Buyer is responsible for ensuring that the warranty on the motorcycle is not affected by the fitting of the Products. On return of any defective Products R&G shall at its option either supply a replacement or refund the purchase money but shall not be liable if the Products have been modified or used or maintained otherwise than in accordance with R&G's or manufacturer's instructions and good engineering practice or if the defect arises from accident or neglect. Other than identified above and subject to R&G not limiting its liability for causing death and personal injury, it shall not be liable for indirect or consequential loss and otherwise its liability shall be limited to the amounts paid by the Buyer for the Products or the fitting or service concerned. These terms do not affect the Buyer's statutory rights.

R&G RETURNS POLICY (NON-FAULTY GOODS)

Returns must be pre-authorized (if not pre-authorized the return will be rejected). Goods may only be returned direct to us if they were purchased direct from us (customer must prove if necessary). Otherwise to be returned to original vendor. Goods must be in re-sellable condition, in the opinion of R&G. All returns are subject to a 25% restocking and handling fee (25% of the gross value exc. P&P – at the prevailing price at time of purchase). The customer must pay any and all carriage charges. No returns of discontinued products, unless within 14 days of purchase. This policy does not affect your statutory rights and does not refer to faulty goods.

R&G

Unit 1, Shelley's Lane, East Worldham, Alton, Hampshire, GU34 3AQ

Tel: +44 (0)1420 89007 Fax: +44 (0)1420 87301 www.rg-racing.com Email: info@rg-racing.com



NOTICE DE MONTAGE POUR AB0037 BARRES AVENTURE
HONDA CB125R-CB300R 2018



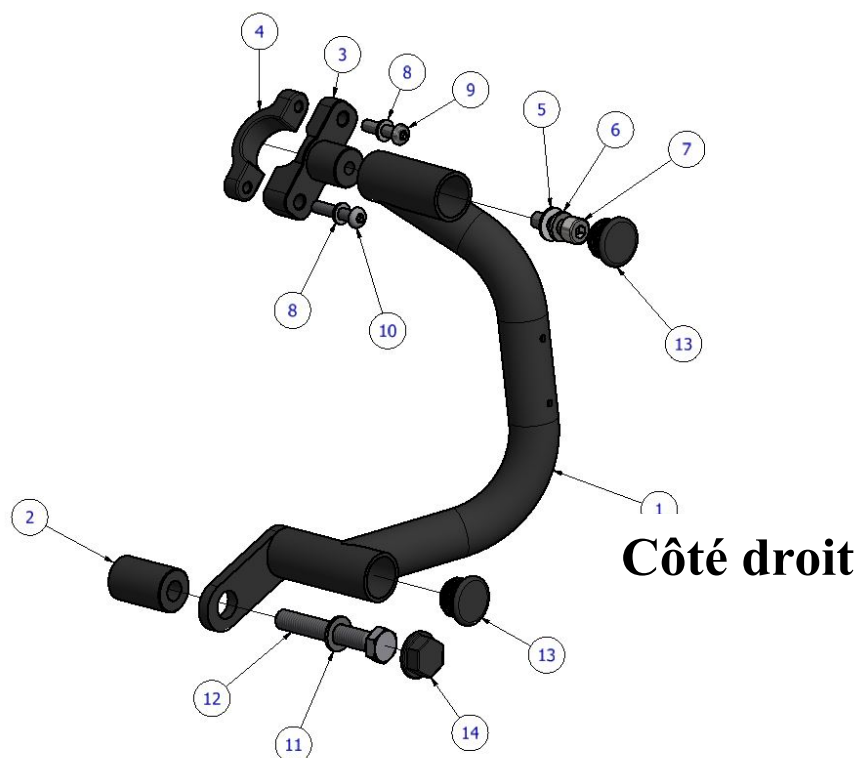
LE KIT CONTIENT LES ARTICLES EXPOSES CI-DESSOUS, VERIFIER QUE TOUTES LES PIECES SOIENT PRESENTES AVANT DE PROCEDER AU MONTAGE.

LA FAÇON DONT LE KIT EST EMBALLE NE CORRESPOND PAS FORCEMENT A LA FAÇON DE MONTER LES PIECES SUR LA MOTO.

LES PARTIES PRESENTÉES PEUVENT ETRE UNIQUEMENT REPRESENTATIVES (POUR LA CLARTÉ DES INSTRUCTIONS UNIQUEMENT).

Notez que si les kits sont emballés avec des rondelles en caoutchouc servant à tenir les composants, *ces rondelles doivent être jetées !*

Notice disponible au téléchargement sur www.rg-racing.com



LÉGENDE:

ARTICLE 1 = BARRE AVENTURE CÔTÉ DROIT (CB070) (x1) {INDIQUÉ CI-DESSUS} – BARRE AVENTURE GAUCHE (CB069) (x1)

ARTICLE 2 = ENTRETOISE (S1158) (x2)

ARTICLE 3 = GRANDE PINCE DE CADRE (F0048) (x2)

ARTICLE 4 = PETITE PINCE DE CADRE (F0049) (x2)

ARTICLE 5 = M8 RONDELLE (x2)

ARTICLE 6 = M8 RONDELLE ELASTIQUE (x2)

ARTICLE 7 = M8 x 1.25 x 25mm BOULON (x2)

ARTICLE 8 = M6 RONDELLE (x4)

ARTICLE 9 = M6 x 1mm x 25mm BOULON (x2)

ARTICLE 10 = M6 x 1mm x 30mm BOULON (x2)

ARTICLE 11 = M10 RONDELLE (x2)

ARTICLE 12 = M10 x 1.25mm x 65mm BOULON (x2)

ARTICLE 13 = BOUCHON DE TUBE (FI0149) (x4)

ARTICLE 14 = M10 BOUCHONS EN CAOUTCHOUC (NC0001) (x2)

R&G

Unit 1, Shelley's Lane, East Worldham, Alton, Hampshire, GU34 3AQ

Tel: +44 (0)1420 89007 Fax: +44 (0)1420 87301 www.rg-racing.com Email: info@rg-racing.com



OUTILS REQUIS

- Clés Allen.
- Clé à cliquet + douille 17mm.

VALEURS DE SERRAGE RECOMMANDEES

M4 BOULON = 8Nm
M5 BOULON = 12Nm
M6 BOULON = 15Nm
M8 BOULON = 20Nm
M10 BOULON = 40Nm



Photo 1



Photo 2

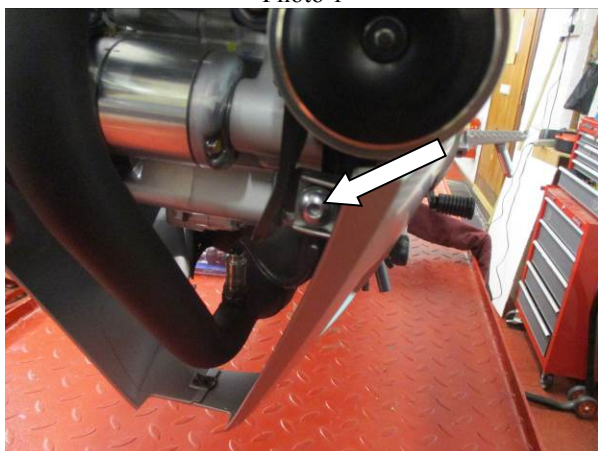


Photo 3

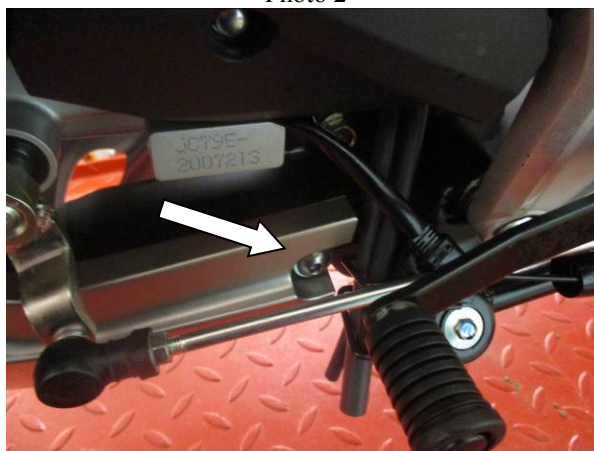


Photo 4



Photo 5



Photo 6



Photo 7



Photo 8



Photo 9



Photo 10

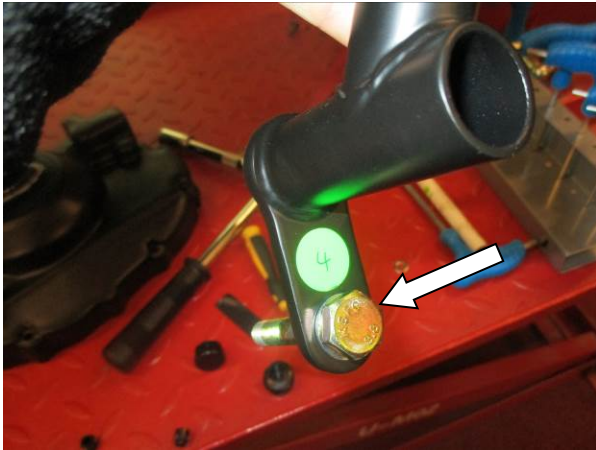


Photo 11



Photo 12



Photo 13

NOTICE DE MONTAGE

- Tout en supportant le panneau, enlever les 4 boulons indiqués de la photo 1 à la photo 4, puis enlever le ventre plat de la moto.
- Positionner la petite pince de cadre (ARTICLE 4) voir photo 5 et photo 6, avec le plus gros décalage au bas (voir photo 5).
- Glisser une rondelle M6 (ARTICLE 8) sur le boulon 25mm M6 (ARTICLE 9) puis insérer le boulon et la rondelle dans l'extrémité plus mince de la grande pince de cadre (ARTICLE 3).
- Glisser une rondelle M6 (ARTICLE 8) sur le boulon 30mm M6 (ARTICLE 10) puis insérer le boulon et la rondelle dans l'extrémité plus épaisse de la grande pince de cadre (ARTICLE 3).
- Monter l'ensemble sur la petite pince, puis serrer de façon égale les 2 boulons pour les fixer en place.
NOTE : NE PAS SERRER COMPLÈTEMENT.
- Enlever le boulon de support moteur, voir photo 9.
- Insérer l'entretoise (ARTICLE 2) dans le creux.

R&G

Unit 1, Shelley's Lane, East Worldham, Alton, Hampshire, GU34 3AQ
 Tel: +44 (0)1420 89007 Fax: +44 (0)1420 87301 www.rg-racing.com Email: info@rg-racing.com



- Glisser la rondelle M10 (ARTICLE 11) sur le boulon M10 x 65mm (ARTICLE 12) puis insérer le boulon dans le support inférieur de la Barre Aventure côté droit (ARTICLE 1) (voir photo 11).
- Glisser une rondelle élastique M8 (ARTICLE 6), et une rondelle M8 (ARTICLE 5) sur le boulon M8 x 25mm (ARTICLE 7).
- Insérer le boulon dans l'entretoise en coupe sur la Barre Aventure côté droit (ARTICLE 1) (voir photo 12).
- Monter l'ensemble sur les 2 supports, puis serrer tous les boulons de façon égale.
- Insérer deux bouchons de tube (ARTICLE 13) dans les creux, voir photo 13.
- Insérer un bouchon (ARTICLE 14) sur le boulon M10.
- Répéter les étapes supérieures pour la Barre Aventure côté gauche.
- Une fois les 2 Barres Aventure montées, remonter le ventre plat de la moto.

ISSUE 1 28/01/2019 (LF)

CONSUMER NOTICE

The catalogue description and any exhibition of samples are only broad indications of the Products and R&G may make design changes which do not diminish their performance or visual appeal and supplying them in such state shall conform to the order. The Buyer acknowledges no representation or warranty (other than as to title) has been given or will apply to the Products other than those in R&G's order or confirmation and the Buyer confirms it has chosen the Products as being of merchantable quality and suitable for its particular purposes. Where R&G fits the Products or undertakes other services it shall exercise reasonable skill and care and rectify any fault free of charge unless the workmanship has been disturbed. The Buyer is responsible for ensuring that the warranty on the motorcycle is not affected by the fitting of the Products. On return of any defective Products R&G shall at its option either supply a replacement or refund the purchase money but shall not be liable if the Products have been modified or used or maintained otherwise than in accordance with R&G's or manufacturer's instructions and good engineering practice or if the defect arises from accident or neglect. Other than identified above and subject to R&G not limiting its liability for causing death and personal injury, it shall not be liable for indirect or consequential loss and otherwise its liability shall be limited to the amounts paid by the Buyer for the Products or the fitting or service concerned. These terms do not affect the Buyer's statutory rights.

R&G RETURNS POLICY (NON-FAULTY GOODS)

Returns must be pre-authorized (if not pre-authorized the return will be rejected). Goods may only be returned direct to us if they were purchased direct from us (customer must prove if necessary). Otherwise to be returned to original vendor. Goods must be in re-sellable condition, in the opinion of R&G. All returns are subject to a 25% restocking and handling fee (25% of the gross value exc. P&P – at the prevailing price at time of purchase). The customer must pay any and all carriage charges. No returns of discontinued products, unless within 14 days of purchase. This policy does not affect your statutory rights and does not refer to faulty goods.

R&G

Unit 1, Shelley's Lane, East Worldham, Alton, Hampshire, GU34 3AQ

Tel: +44 (0)1420 89007 Fax: +44 (0)1420 87301 www.rg-racing.com Email: info@rg-racing.com



MONTAGEANLEITUNG FÜR AB0037 ADVENTURE BAR STURZBÜGEL
HONDA CB125R-CB300R 2018



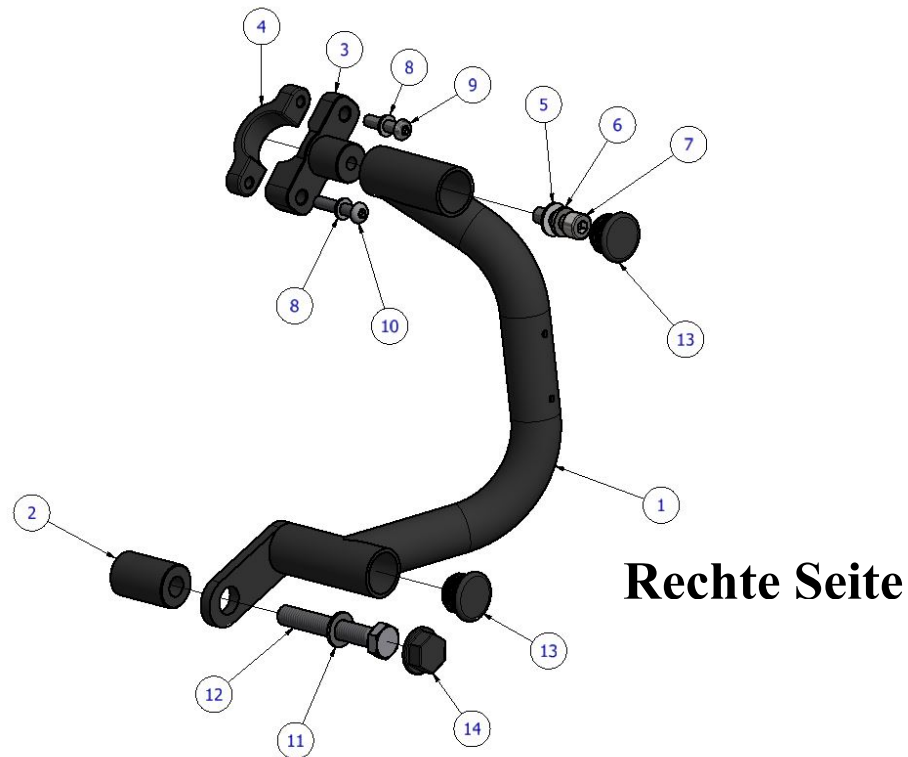
ALLE TEILE SIND UNTEN ABGEBILDET UND GEKENNZEICHNET. BEVOR SIE MIT DER MONTAGE BEGINNEN, ÜBERPRÜFEN SIE, DASS ALLE TEILE VORHANDEN SIND.

Hinweis: Die Verpackung der Teile stellt nicht die Reihenfolge der Montage dar.

DIE UNTEN ABGEBILDETEN TEILE DIENEN LEDIGLICH ZUR ERKLÄRUNG

Hinweis für Kits mit Plastikunterlegscheiben an den Schrauben – *Diese Plastikunterlegscheiben werden nicht für den Einbau benötigt!*

Eine digitale Version dieser Montageanleitung kann auf folgender Seite heruntergeladen werden:
www.rg-racing.com



LIEFERUMFANG

- ARTIKEL 1 = ADVENTURE BAR RECHTE SEITE (CB070) (x1) {OBEN ABGEBILDET} UND ADVENTURE BAR LINKE SEITE (CB069) (x1)
 ARTIKEL 2 = DISTANZHALTER (S1158) (x2)
 ARTIKEL 3 = GROSSE KLEMME (F0048) (x2)
 ARTIKEL 4 = KLEINE KLEMME (F0049) (x2)
 ARTIKEL 5 = M8 UNTERLEGSCHLEIBE (x2)
 ARTIKEL 6 = M8 FEDERRING (x2)
 ARTIKEL 7 = M8 x 1,25 x 25mm INNENSECHSKANTSCHRAUBE (x2)
 ARTIKEL 8 = M6 UNTERLEGSCHLEIBE (x4)
 ARTIKEL 9 = M6 x 1mm x 25mm INBUSSCHRAUBE (x2)
 ARTIKEL 10 = M6 x 1mm x 30mm INBUSSCHRAUBE (x2)
 ARTIKEL 11 = M10 UNTERLEGSCHLEIBE (x2)
 ARTIKEL 12 = M10 x 1.25mm x 65mm SECHSKANTSCHRAUBE (x2)
 ARTIKEL 13 = ROHRSTOPFEN (FI0149) (x4)
 ARTIKEL 14 = M10 SECHSKANT-KAPPEN AUS GUMMI (NC0001) (x2)

R&G

Unit 1, Shelley's Lane, East Worldham, Alton, Hampshire, GU34 3AQ
 Tel: +44 (0)1420 89007 Fax: +44 (0)1420 87301 www.rg-racing.com Email: info@rg-racing.com



SIE BENÖTIGEN FOLGENDES WERKZEUG

- Satz Inbusschlüssel
- 17mm Steckschlüssel

ALLGEMEINE ANZUGSDREHMOMENTE:

- M4 SCHRAUBE = 8Nm
- M5 SCHRAUBE = 12Nm
- M6 SCHRAUBE = 15Nm
- M8 SCHRAUBE = 20Nm
- M10 SCHRAUBE = 40Nm



Abbildung 1

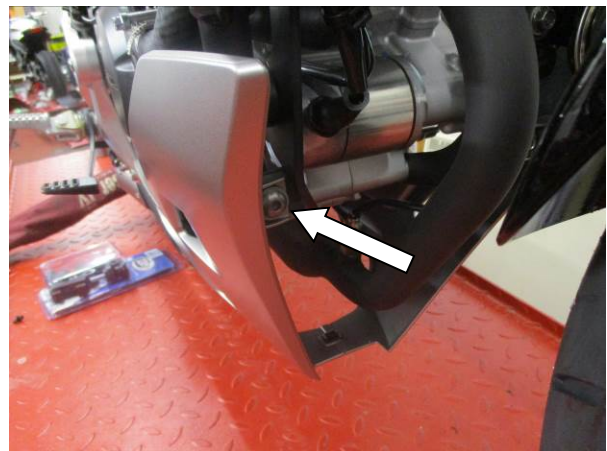


Abbildung 2



Abbildung 3

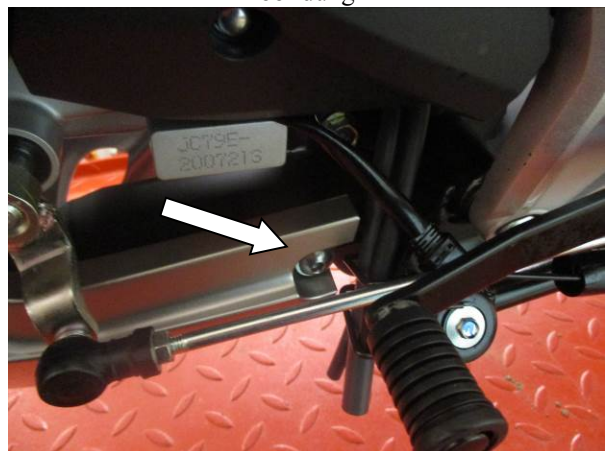


Abbildung 4



Abbildung 5



Abbildung 6



Abbildung 7



Abbildung 8



Abbildung 9



Abbildung 10



Abbildung 11



Abbildung 12



Abbildung 13

MONTAGEANLEITUNG

- Stützen Sie das Verkleidungsunterteil während Sie die vier Schrauben entfernen, die in den Abbildungen 1 – 4 gekennzeichnet sind, dann entfernen Sie das Verkleidungsunterteil.
- Die kleine Klemme (Artikel 4) vorsichtig positionieren wie in den Abbildungen 5 und 6 abgebildet mit dem größeren Versatz unten (siehe Abbildung 5).
- Schieben Sie eine M6 Unterlegscheibe (Artikel 8) über die 25 mm M6 Schraube (Artikel 9) und die Schraube mit der Unterlegscheibe in das schmalere Ende der großen Klemme (Artikel 3) einführen.
- Schieben Sie eine M6 Unterlegscheibe (Artikel 8) über die 30 mm M6 Schraube (Artikel 10) und die Schraube mit der Unterlegscheibe in das dicke Ende der großen Klemme (Artikel 3) einführen.
- Die Einheit an die kleine Klemme ansetzen und die zwei Schrauben gleichmäßig anziehen, um sie in Position zu sichern. HINWEIS: NICHT FESTZIEHEN.
- Entfernen Sie die Schraube für die Motorhalterung, die in Abbildung 9 abgebildet ist.
- Den Distanzhalter in die Versenkung einsetzen (Artikel 2).

R&G

Unit 1, Shelley's Lane, East Worldham, Alton, Hampshire, GU34 3AQ

Tel: +44 (0)1420 89007 Fax: +44 (0)1420 87301 www.rg-racing.com Email: info@rg-racing.com



- Schieben Sie die M10 Unterlegscheibe (Artikel 11) über die M10 x 65mm Schraube (Artikel 12) und die Schraube in die untere Halterung des Adventure Bar Sturzbügels für die rechte Seite (Artikel 1) eindrehen – siehe Abbildung 11.
- Schieben Sie einen M8 Federring (Artikel 6) und eine M8 Unterlegscheibe (Artikel 5) über die M8 x 25mm Innensechskantschraube (Artikel 7).
- Die Schraube in die hohlen Distanzhalter am rechten Adventure Sturzbügel (Artikel 1) einsetzen – siehe Abbildung 12).
- Die Einheit an die zwei Halterungen ansetzen und die Schrauben gleichmäßig anziehen.
- Zwei Rohrstopfen (Artikel 13) in den Vertiefungen einsetzen – siehe Abbildung 13.
- Die Sechskant-Kappe (Artikel 14) an der M10 Schraube montieren.
- Wiederholen Sie die oben beschriebenen Schritte für den linken Adventure Bar Sturzbügel.
- Wenn beide Adventure Bar Sturzbügel montiert sind, das Verkleidungsunterteil wieder montieren.

AUSGABE 1 28/01/2019 (LF)

CONSUMER NOTICE

The catalogue description and any exhibition of samples are only broad indications of the Products and R&G may make design changes which do not diminish their performance or visual appeal and supplying them in such state shall conform to the order. The Buyer acknowledges no representation or warranty (other than as to title) has been given or will apply to the Products other than those in R&G's order or confirmation and the Buyer confirms it has chosen the Products as being of merchantable quality and suitable for its particular purposes. Where R&G fits the Products or undertakes other services it shall exercise reasonable skill and care and rectify any fault free of charge unless the workmanship has been disturbed. The Buyer is responsible for ensuring that the warranty on the motorcycle is not affected by the fitting of the Products. On return of any defective Products R&G shall at its option either supply a replacement or refund the purchase money but shall not be liable if the Products have been modified or used or maintained otherwise than in accordance with R&G's or manufacturer's instructions and good engineering practice or if the defect arises from accident or neglect. Other than identified above and subject to R&G not limiting its liability for causing death and personal injury, it shall not be liable for indirect or consequential loss and otherwise its liability shall be limited to the amounts paid by the Buyer for the Products or the fitting or service concerned. These terms do not affect the Buyer's statutory rights.

R&G RETURNS POLICY (NON-FAULTY GOODS)

Returns must be pre-authorized (if not pre-authorized the return will be rejected). Goods may only be returned direct to us if they were purchased direct from us (customer must prove if necessary). Otherwise to be returned to original vendor. Goods must be in re-sellable condition, in the opinion of R&G. All returns are subject to a 25% restocking and handling fee (25% of the gross value exc. P&P – at the prevailing price at time of purchase). The customer must pay any and all carriage charges. No returns of discontinued products, unless within 14 days of purchase. This policy does not affect your statutory rights and does not refer to faulty goods.

R&G

Unit 1, Shelley's Lane, East Worldham, Alton, Hampshire, GU34 3AQ

Tel: +44 (0)1420 89007 Fax: +44 (0)1420 87301 www.rg-racing.com Email: info@rg-racing.com